

OPEN ACCESS

Edited by:

Zhiwei Wu,

Nanjing University, China

Reviewed by:

Jan Potempa,

University of Louisville, United States

Paul Thompson,

The Scripps Research Institute,

United States

**Correspondence:*

Peter G. Barlow

p.barlow@napier.ac.uk

Specialty section:

This article was submitted to

Viral Immunology,

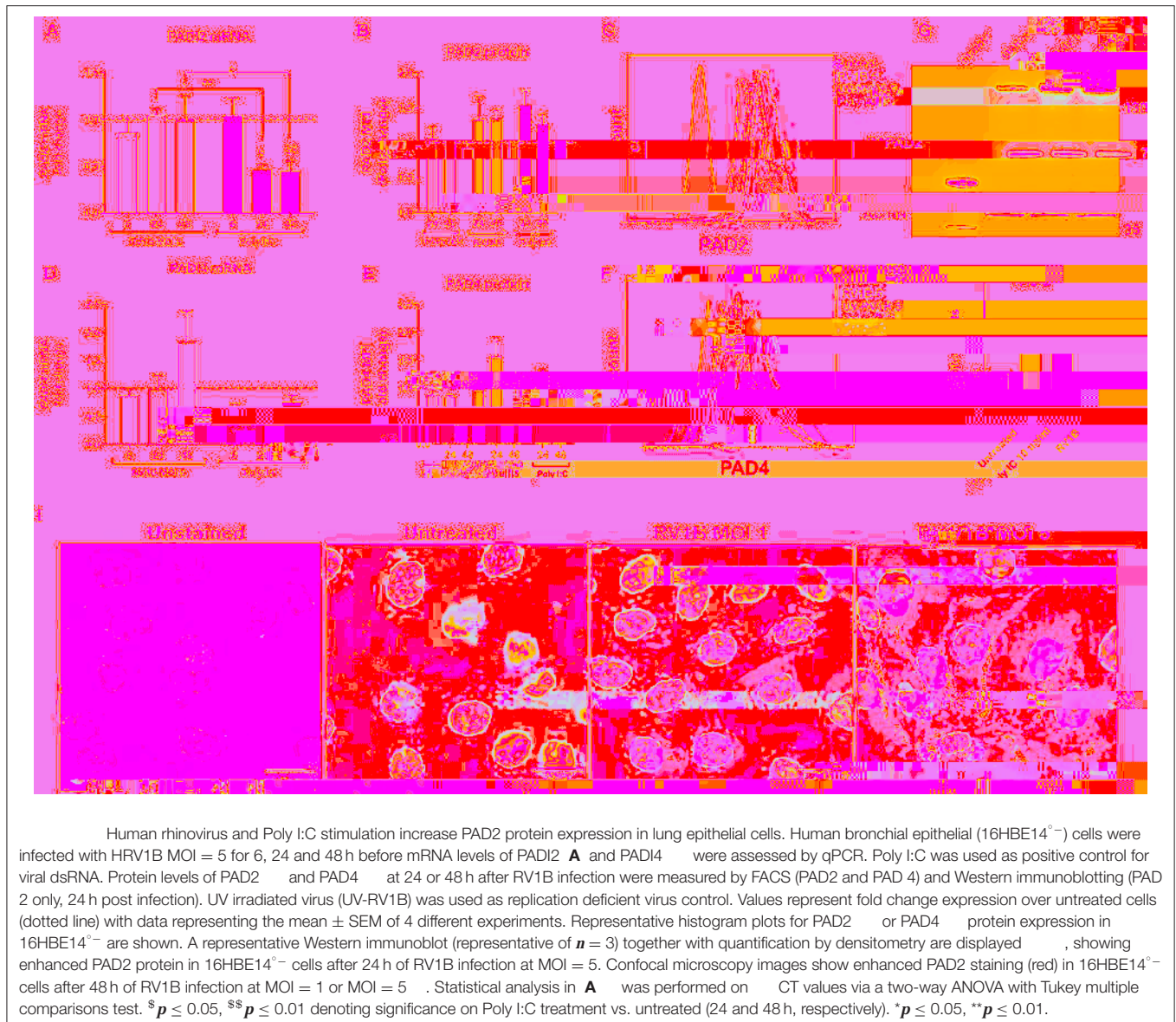
a significant burden of morbidity and mortality as well as substantial healthcare costs (6). There are currently no effective therapeutics, or preventative vaccines, licensed for use to treat or prevent HRV infection.

(Thermo-Fisher, UK) and seeded at 5×10^4 cells/ml for 12-well plates and allowed to grow for 24 h before infection or

A qPCR Primer sequences utilized in this study.

	●	v	n
PADI1	TCTACTCGGACTGGC TCTCTG	TGCTTCTTTTTGCCTG GTGTTT	This work
PADI2	GCTTTCCTCTGTCTG GTGGT	TTTCTTTGTGCCGGG GATGG	This work
PADI3	CTGCAGAGAATCGTG CGTGT	TGATCTCCAAAGTCG CGTCAA	This work
PADI4	CCATCCTGCTGGTGA ACTGT	GAAGTCCTTGGGGGT CTTCG	This work
GAPDH	AAGCTCATTTCCTGG TATGACA	TCTTACTCCTTGGAG GCCATGT	(

induced an increase in CCL5 secretion compared to untreated cells, while the addition of LL-37 reduced this effect. The effects of LL-37_{1cit} were indistinguishable from those of native LL-37, whereas LL-37_{2cit}, and LL-37_{3cit} showed a moderate loss in their ability to reduce HRV-induced CCL5 secretion. LL-37



staining and protein citrullination was detectable in the presence of HRV (Figures 3C,D). Taken collectively these data suggest that HRV infection, or activation of TLR3, results in increased protein citrullination, including histone H3.

DISCUSSION

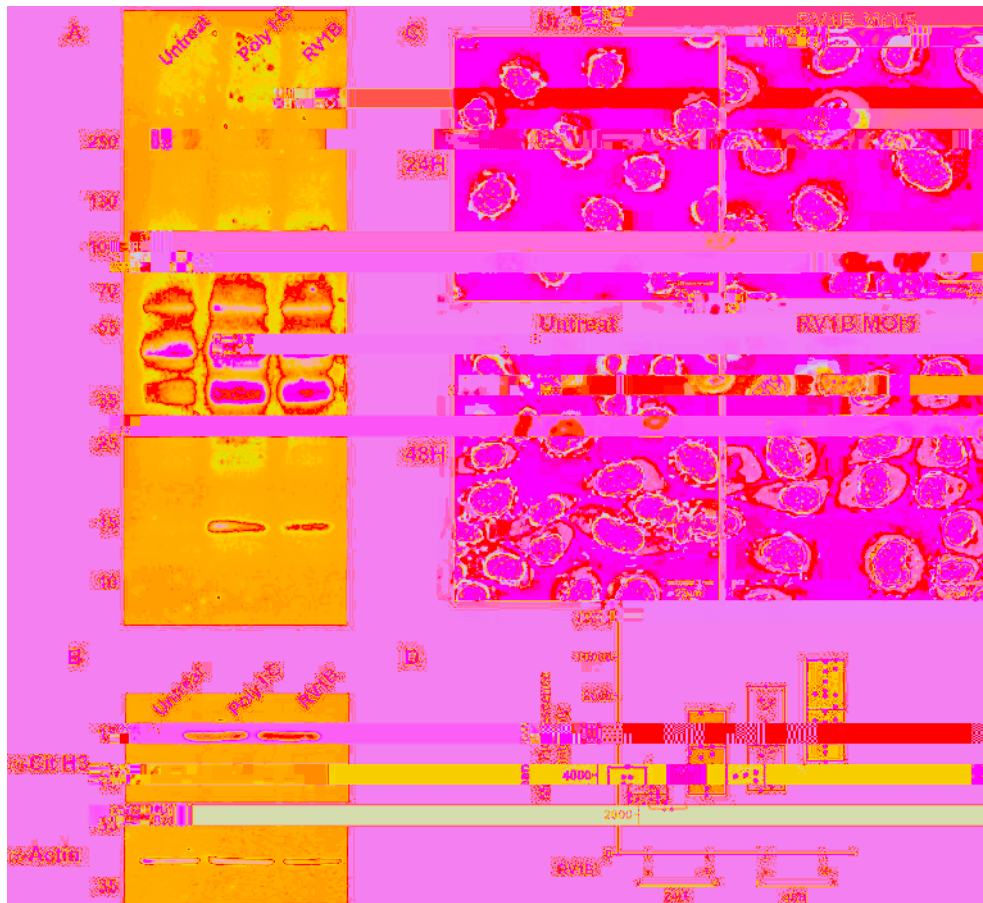
Previous studies have shown PAD2 and PAD4 isoforms citrullinate LL-37 peptides *in vitro*, inhibiting the direct antibacterial activity of LL-37 (30), the ability of LL-37 to enhance nucleic acid uptake and subsequent sensing by plasmacytoid dendritic cells (53), and the ability of LL-37 to reduce inflammation in response to lipopolysaccharide (LPS) (35). Our results confirm that citrullination abrogates the antimicrobial and immunomodulatory activities of LL-37 in the context of viral infection, and further show that

citrullination of LL-37 abrogates its antiviral activity, identifying a novel role for citrullination in the innate response to viral infection.

Airway epithelial cells are the main target of HRV infection and replication. In response to infection, these cells can release host defense peptides (11) which play a key role in the inflammatory and innate immune responses (12). LL-37 concentrations of $\sim 5 \mu\text{g/ml}$ have been recovered in the bronchoalveolar lavage fluid (BAL) from uninfected infants, with levels up to $\sim 30 \mu\text{g/ml}$ post infection (11, 54). Here we used concentrations of exogenous LL-37 that mimic physiological concentrations, and in agreement with our own recent studies (36) and others (37, 38), show that direct incubation of LL-37 with HRV prior to infection of lung epithelial cells is effective at reducing HRV RNA copy number and virion release into cell supernatants.



4 Human rhinovirus and Poly I:C stimulation increase PAD2 expression in CD14⁻CD16⁺⁺ PBMCs. Peripheral blood mononuclear cells (PBMC) were isolated and exposed to different doses of HRV (viral MOI of 1 or 5) or to 10 μg/ml of Poly I:C for 24 or 48 h. Intracellular PAD2 expression was assessed in different PBMC subsets by FACS. Dot plots indicate the gating strategy used and histogram overlays indicate representative PAD2 levels (MFI) in different PBMC subsets, **A** CD3⁺ CD56⁻ T-cells, **B** CD19⁺ CD3⁻ CD56⁻ B-cells, and **C** CD14⁺ CD16^{low} CD19⁻ CD3⁻ CD56⁻ Monocytes. Bars represent the Mean Fluorescence Index (MFI) of PAD2 levels expressed in each PBMC subset after 48 h of infection: T-cells, NK-T cells, NK-cells, B-cells, CD14⁻ CD16⁺⁺ monocytes, and CD14⁺ CD16^{low} monocytes. Bars indicate the mean ±




Human rhinovirus and Poly I:C stimulation increase protein citrullination in 16HBE14⁻ cells. Human bronchial epithelial (16HBE14⁻) cells were infected with HRV1B MOI = 5 or treated with Poly IC and total citrullination was measured with a monoclonal antibody against peptidyl citrulline (F95). **A** After 24 h, lysates were obtained and blotted with F95 antibody, α -citrullinated histone H3, and actin, which was used as loading control. Confocal microscopy images were also taken at 24 or 48 h after infection, showing F95 staining (RED) and DAPI as nuclear counterstaining (BLUE). Quantification of at least four different fields of view from is shown in , with each dot representing a different cell and boxes displaying min to max and mean values of F95 staining intensity.

the net charge of LL-37 peptide, resulting in LL-37_{cit} with a +1 net charge, as opposed to the +6 net charge of native LL-37 (30). This would affect the ability of LL-37 to interact electrostatically with negatively charged molecules such as LPS (56). Interestingly, while citrullination of LL-37 substantially reduced the antibacterial activity of the peptide against *S. aureus*, prior studies have determined that proteinases released by this

- chemokines and role in pathology. *Drug Discov Today Technol.* (2012) 9:e227–314. doi: 10.1016/j.ddtec.2012.06.002
28. Lewis HD, Nacht M. iPAD or PADI-‘tablets’ with therapeutic disease potential? *Curr Opin Chem Biol.* (2016) 33:169–78. doi: 10.1016/j.cbpa.2016.06.020
 29. Makrygiannakis D, Hermansson M, Ulfgren AK, Nicholas AP, Zendman AJ, Eklund A, et al. Smoking increases peptidylarginine deiminase 2 enzyme expression in human lungs and increases citrullination in BAL cells. *Ann Rheum Dis.* (2008) 67:1488–92. doi: 10.1136/ard.2007.075192
 30. Kilsgard O, Andersson P, Malmsten M, Nordin SL, Linge HM, Eliasson M, et al. Peptidylarginine deiminases present in the airways during tobacco smoking and inflammation can citrullinate the host defense peptide LL-37, resulting in altered activities. *Am J Respir Cell Mol Biol.* (2012) 46:240–8. doi: 10.1165/rcmb.2010-0500OC
 31. Lugli EB, Correia RE, Fischer R, Lundberg K, Bracke KR, Montgomery AB, et al. Expression of citrulline and homocitrulline residues in the lungs of non-smokers and smokers: implications for autoimmunity in rheumatoid arthritis. *Arthritis Res Ther.* (2015) 17:9. doi: 10.1186/s13075-015-0520-x
 32. Damgaard D, Friberg Bruun Nielsen M, Quisgaard Gaunsbaek M, Palarasah Y, Svane-Knudsen V, Nielsen CH. Smoking is associated with increased levels of extracellular peptidylarginine deiminase 2 (PAD2) in the lungs. *Clin Exp Rheumatol.* (2015) 33:405–8. doi: 10.1016/j.jim.2013.12.008
 33. Mohamed BM, Verma NK, Davies AM, McGowan A, Crosbie-Staunton K, Prina-Mello A, et al. Citrullination of proteins: a common post-translational modification pathway induced by different nanoparticles in vitro and in vivo. *Nanomedicine.* (2012) 7:1181–95. doi: 10.2217/nnm.11.177
 34. Maezawa Y, Paltser G, Tsui H, Cheung R, Wu P, Nicholas AP, et al. 2-Chloroacetamide, a novel immunomodulator, suppresses antigen-induced mouse airway inflammation. *Allergy.* (2015) 70:1130–8. doi: 10.1111/all.12651
 35. Koziel J, Bryzek D, Sroka A, Maresz K, Glowczyk I, Bielecka E, et al. Citrullination alters immunomodulatory function of LL-37 essential for prevention of endotoxin-induced sepsis. *J Immunol.* (2014) 192:5363–72. doi: 10.4049/jimmunol.1303062
 36. Sousa FH, Casanova V, Findlay F, Stevens C, Svoboda P, Pohl J, et al. Cathelicidins display conserved direct antiviral activity towards rhinovirus. *Peptides.* (2017) 95:76–83. doi: 10.1016/j.peptides.2017.07.013
 37. Telcian AG, Zdrenghea MT, Edwards MR, Laza-Stanca V, Mallia P, Johnston SL, et al. Vitamin D increases the antiviral activity of bronchial epithelial cells in vitro. *Antiviral Res.* (2017) 137:93–101. doi: 10.1016/j.antiviral.2016.11.004
 38. Schogler A, Muster RJ, Kieninger E, Casaulta C, Tapparel C, Jung A, et al. Vitamin D represses rhinovirus replication in cystic fibrosis cells by inducing LL-37. *Eur Respirat J.* (2016) 47:520–30. doi: 10.1183/13993003.00665-2015
 39. Zughaier SM, Svoboda P, Pohl J, Stephens DS, Shafer WM. The human host defense peptide LL-37 interacts with *Neisseria meningitidis* capsular polysaccharides and inhibits inflammatory mediators release. *PLoS ONE.* (2010) 5:e13627. doi: 10.1371/journal.pone.0013627
 40. Gern JE, Vrtis R, Kelly EA, Dick EC, Busse WW. Rhinovirus produces nonspecific activation of lymphocytes through a monocyte-dependent mechanism. *J Immunol.* (1996) 157:1605–12.
 41. Newcomb DC, Sajjan U, Nanua S, Jia Y, Goldsmith AM, Bentley JK, et al. Phosphatidylinositol 3-kinase is required for rhinovirus-induced airway epithelial cell interleukin-8 expression. *J Biol Chem.* (2005) 280:36952–61. doi: 10.1074/jbc.M502449200
 42. Nakashima K, Hagiwara T, Yamada M. Nuclear localization of peptidylarginine deiminase V and histone deimination in granulocytes. *J Biol Chem.* (2002) 277:49562–8. doi: 10.1074/jbc.M208795200
 43. König MF, Andrade F. A critical reappraisal of neutrophil extracellular traps and NETosis mimics based on differential requirements for protein citrullination. *Front Immunol.* (2016) 7:461. doi: 10.3389/fimmu.2016.00461
 44. Pan B, Alam HB, Chong W, Mobley J, Liu B, Deng Q, et al. CitH3: a reliable blood biomarker for diagnosis and treatment of endotoxic shock. *Sci Rep.* (2017) 7:8972. doi: 10.1038/s41598-017-09337-4
 45. Toussaint M, Jackson DJ, Swieboda D, Guedan A, Tsourouktoglou TD, Ching YM, et al. Host DNA released by NETosis promotes rhinovirus-induced type-2 allergic asthma exacerbation. *Nat Med.* (2017) 23:681–91. doi: 10.1038/nm.4332
 46. Paone G, Wada A, Stevens LA, Matin A, Hirayama T, Levine RL, et al. ADP ribosylation of human neutrophil peptide-1 regulates its biological properties. *Proc Natl Acad Sci USA.* (2002) 99:8231–5. doi: 10.1073/pnas.122238899
 47. Reed LJ, Muench H. A simple method of estimating fifty per cent endpoints. *Am J Hyg.* (1938) 27:493–7. doi: 10.1093/oxfordjournals.aje.a118408
 48. Foulquier C, Sebbag M, Clavel C, Chapuy-Regaud S, Al Badine R, Mechin

63. Zhou Y, Di Pucchio T, Sims GP, Mittereder N, Mustelin T. Characterization of the hypercitrullination reaction in human neutrophils and other leukocytes. *Mediators Inflamm.* (2015) 2015:236451. doi: 10.1155/2015/236451
64. Wong KL, Yeap WH, Tai JJ, Ong SM, Dang TM, Wong SC. The three human monocyte subsets: implications for health and disease. *Immunol Res.* (2012) 53:41–57. doi: 10.1007/s12026-012-8297-3
65. Koro C, Hellvard A, Delaleu N, Binder V, Scavenius C, Bergum B, et al. Carbamylated LL-37 as a modulator of the immune response. *Innate Immun.* (2016) 22:218–29. doi: 10.1177/1753425916631404
66. Wang Z, Nicholls SJ, Rodriguez ER, Kummu O, Horkko S, Barnard J, et al. Protein carbamylation links inflammation, smoking, uremia and atherogenesis. *Nat Med.* (2007) 13:1176–84. doi: 10.1038/nm1637

D  **r** The findings and conclusions in this report are those of the authors and do not necessarily represent the official position of CDC.

Conf l o n r The authors declare that the research was conducted in the absence of any commercial or financial relationships that could be construed as-64.75528-19,1(a